

# Candle plate in frosty colours

Instructions No. 2398

🔪🔪🔪 Difficulty: Beginner

🕒 Working time: 2 Hours

When it comes to winter decorations, it's nice to have something frosty and cold. And even after Christmas, candles can look great in this way.



## The plate

First spray the plate, some of the balls and also some of the snowflakes with the paint. It is best to do this outside and with gloves.

If you are working indoors, protect your surroundings from the spray and make sure there is enough ventilation.





## The candles

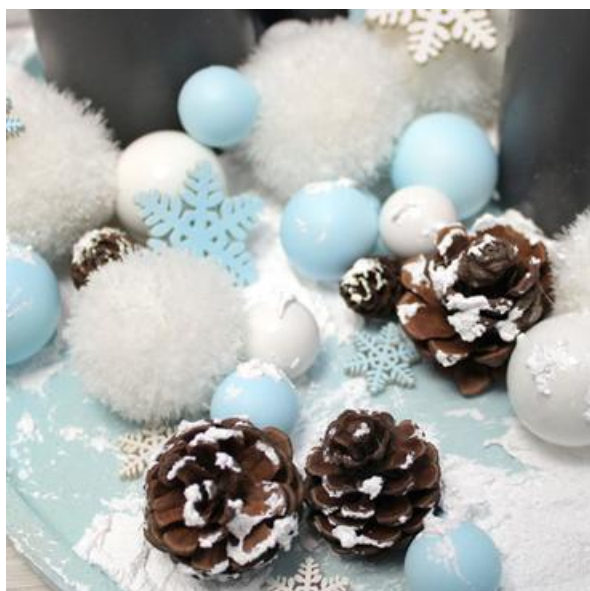
Once the paint is dry, place your candles and decorate the plate around the candles with the decorative snow, then either wait until the snow has dried or continue working straight away.

Depending on whether you want your decoration to rest on the snow or be incorporated into it, place the pom-poms and baubles one by one and fix them in place with hot glue.

## Decorate

Then you can decorate the plate with snowflakes and cones. To make everything look more coherent, add a little snow to the decoration.

Your candle plate is ready and you can of course decorate it as much as you like. When burning the candles, make sure that the flame does not come into contact with the decorations and that it does not burn all the way to the bottom.



### Article information:

Article number	Article name	Qty
15421	Christmas balls made of glass on wire, 36 pieces, Ø 20 / 25 / 30 mmWhite-Opal	1
762250-29	Marabu do it SATIN MATTPastel Blue	1
735520-25	VBS Decorative snow250 ml	1
616409	VBS Fir cones, 250 g	1

617765	VBS Mini cone,nature	1
134026	Mini hot glue gun "Flower Power", with cable	1