

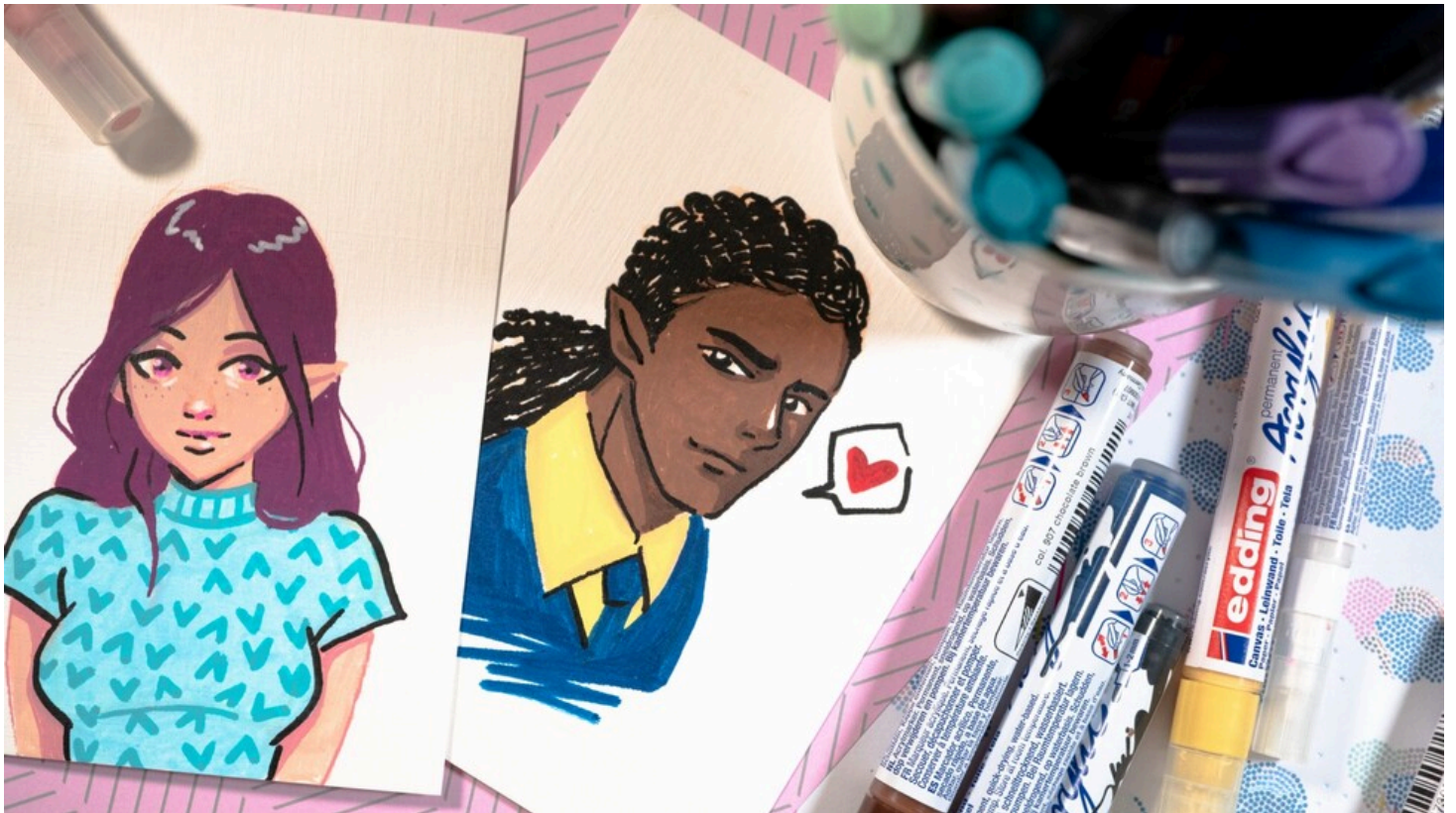
# Create mangas yourself

Instructions No. 2863

Difficulty: Beginner 🍃🍃🍃🍃

Working time: 3 Hours

Do you want to paint manga or anime characters? It's not that difficult, we'll show you how to do it step by step. Particularly important are the large eyes that characterise all mangas and reflect the emotions of the respective character. With edding acrylic markers and fibre-tip pens, you'll have just the right "tools" at hand to create great pictures. At the same time, you'll also find the right paper here - the edding acrylic and oil painting pad. It is perfectly matched to the specific properties of the acrylic markers and has very good absorbency.



For this motif, you will need edding acrylic marker in different widths and colors of your choice. Take a sheet from the edding acrylic- and oil painting pad and an edding 1200 felt-tip pens in cherry blossom or an edding 1340 brush pen in light orange (shown in the picture) and sketch your motif.



Before you start painting, first activate the acrylic marker as follows: Shake the marker with the cap on until you can hear the mixing ball inside the pen, then carefully pump it up and down until the ink appears in the tip. With the wide acrylic marker edding 5000 with chisel tip it is very important to hold the marker at a slight angle so that the chisel tip is not damaged. Write marker on a piece of Paper . You can now color in the large areas with the activated markers. The wide acrylic marker and the acrylic marker medium are particularly suitable. The hair was designed here in the color "berry".



The color warm beige, for example, is very suitable for skin tone .

Of course, great details are a must. With the fine acrylic marker edding 5300, fine elements on the face, such as the outlines around the eyes or color accents, are particularly well done. You can also use the narrow side of the chisel tip edding 5000 acrylic marker for this.



Add the finishing touches to your picture by painting the outline. The best way to do this is to use the fine acrylic marker edding 5300 or the edding 1340 brush pen in black. Your work of art is finished!



# New instructions

Straight to your inbox every week

register now >

## Article information:

Article number	Article name	Qty
14887	edding 5000 Acrylic "Acrylic marker - Wide" Warm beige	1
14921	edding 5100 Acrylic "Acrylic marker - Medium" Telemagenta	1
11469	edding 1340 "Brush Lettering", set of 20	1
16822	edding Acrylic/oil painting block DIN A4	1