

# Decorative frame for plant pot

Instructions No. 3043

Difficulty: Beginner 🍃🍃🍃🍃

Working time: 1 hour 30 Minutes

Are you looking for a beautiful decoration for indoors or outdoors? Our **frame for plant pots** is easy to make using **wooden blocks**. With wooden blocks, rattan wickerwork and a little paint, you can create a great eye-catcher.



## This is how you make the frame:

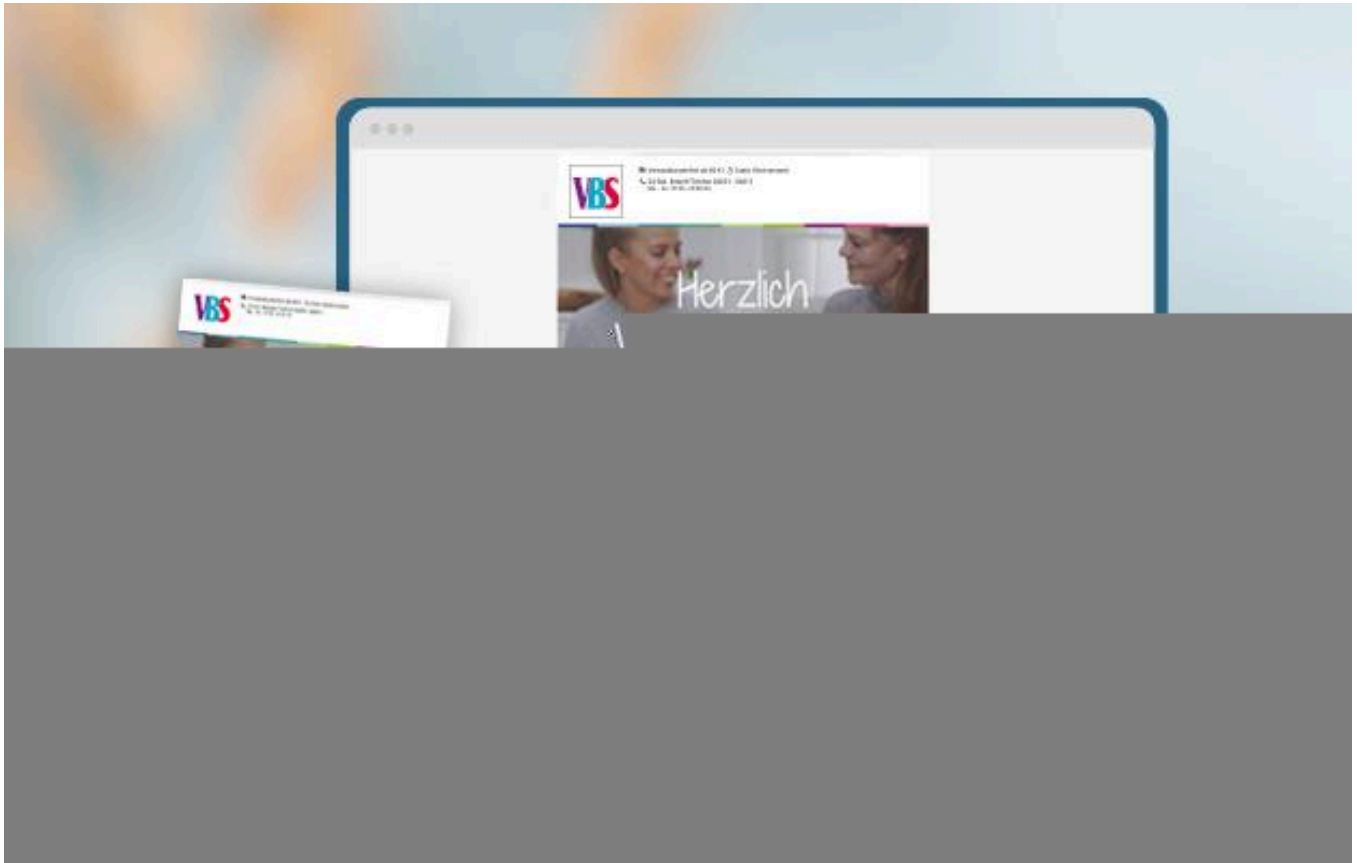
For the **decorative frame**, you will need 12 **craft blocks** made from the wood of your choice. If necessary, you can sand them down once before gluing them together.

First paint all the craft blocks in pastel-olive green. If you want the paint to be opaque, apply 2-3 coats. After the paint has dried, wipe over the blocks with the ink pads to achieve the beautiful shabby chic look. You can then start gluing the individual parts together.

For the base, glue four craft blocks together. Then create the rectangular frame by gluing four more blocks together at the edges. You will need two frames in total.

Now cut the **rattan weave** to fit the frames. Fix the wickerwork between the two frames with hot glue. Finally, glue the finished frame to the edge of the base plate.

A **terracotta-pot** with a diameter of 6 cm fits perfectly on the decorative frame.



## New instructions

Straight to your inbox every week

register now >

Article information:

<b>Article number</b>	<b>Article name</b>	<b>Qty</b>
21844	VBS Handicraft blocksBeech wood	1
22955	VBS Handicraft blocksAsh wood	1
21845	VBS Handicraft blocksOak wood	1
111065	VBS Handicraft glue85 g	1
21818	Stamperia DYE INK PADCoffee	1
15228	Rattan wickerwork "Coarse"	1
517003	Sandpaper, set of 6	1
571647-06	Terracotta potsInside-Ø 6 cm, 10 pcs.	1
571654-06	Terracotta-underplateInside-Ø 5 cm, 5 pcs.	1
51163	Hot glue gun, 15-80 Watt	1