

# Pouring lotus flowers and Buddha candle holders

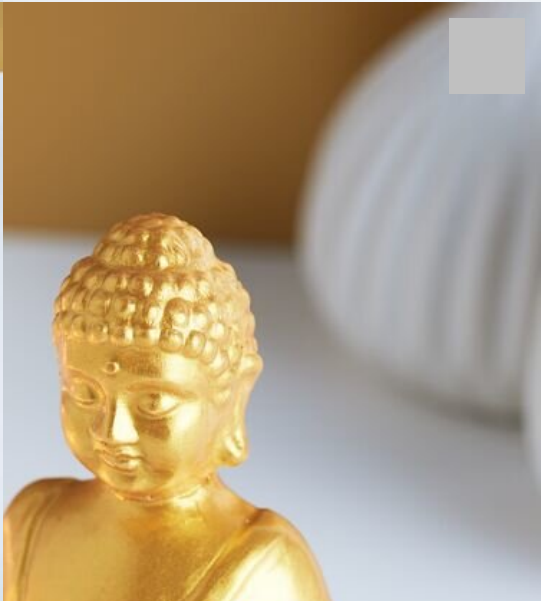
Instructions No. 2974

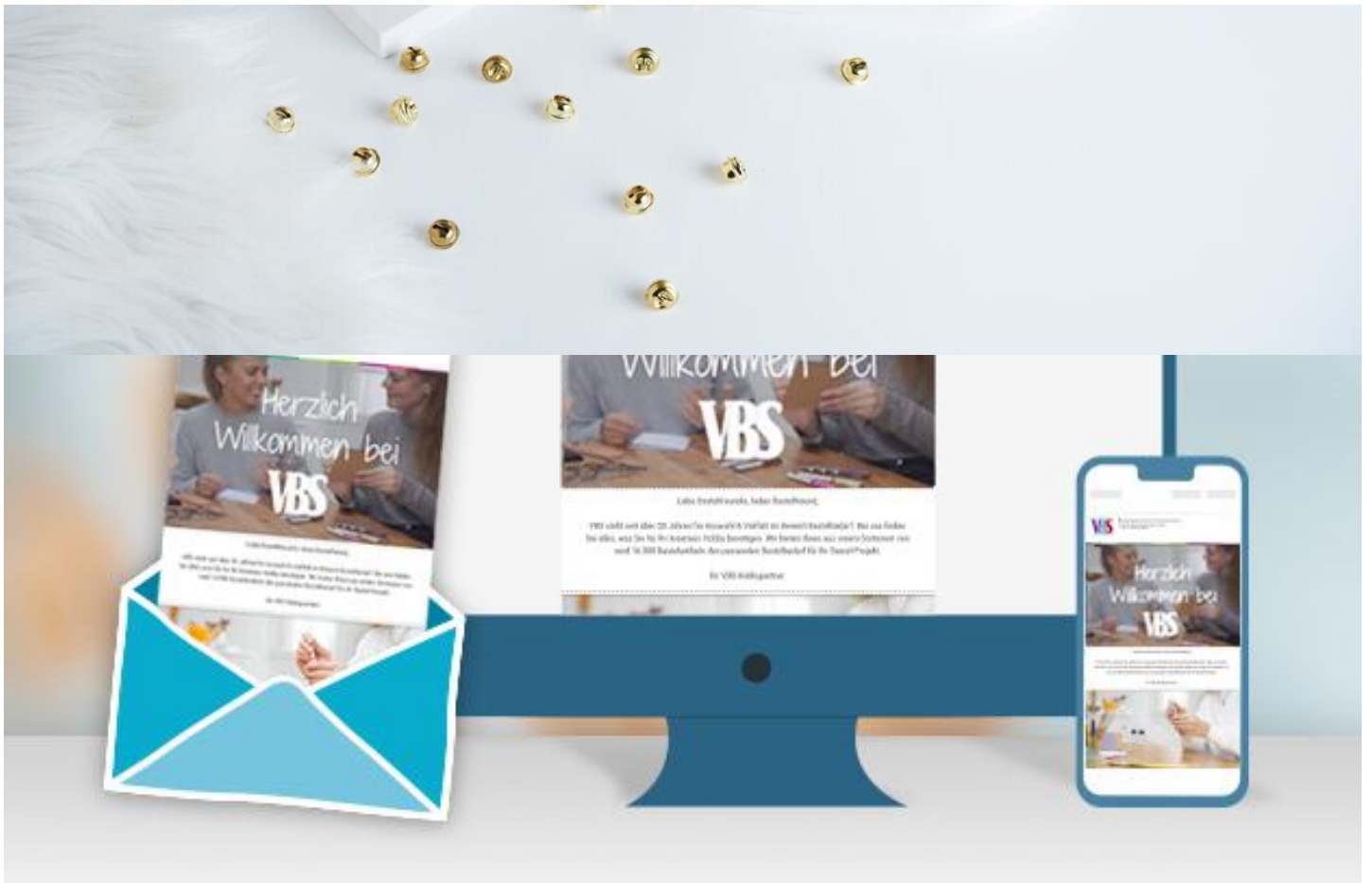
Difficulty: Beginner

Working time: 4 Hours

Four **elegant bowls** in the shape of **lotus blossoms** and a **golden Buddha** are created in just a few simple steps. Let your creativity blossom and create a unique decoration for your home!







**New instructions**

Straight to your inbox every week

Register  
now

**Article information:**

Article number	Article name	Qty
22921	Silicone casting mould "Bowl lotus flower"	1
485555-01	Casting powder "Raysin 100", white1 kg	1
491280	Tealight candles, flat pack of 75	1
22944	Casting mould "Rectangle decorative plate"	1
20251	Silicone casting mould "Coaster oval"	1
12272	Latex casting mould "Buddha"	1
810401	Mixing cup made of rubber	1
590341	Spray Paint "Gold"	1
756556-06	VBS Colour Concentrate, 25 mlGreen	1