

# School enrollment - School bags from Paper

Instructions No. 3323

Difficulty: Beginner 🍴🍴🍴🍴

Working time: 1 hour

Starting school is one of the most special moments in a child's life - an event that calls for creative and unique invitations. In these instructions, you will learn how to make original invitation cards in the shape of small satchels that are sure to delight all guests at the school enrolment party. Let your creativity run wild and design invitations that will be remembered!

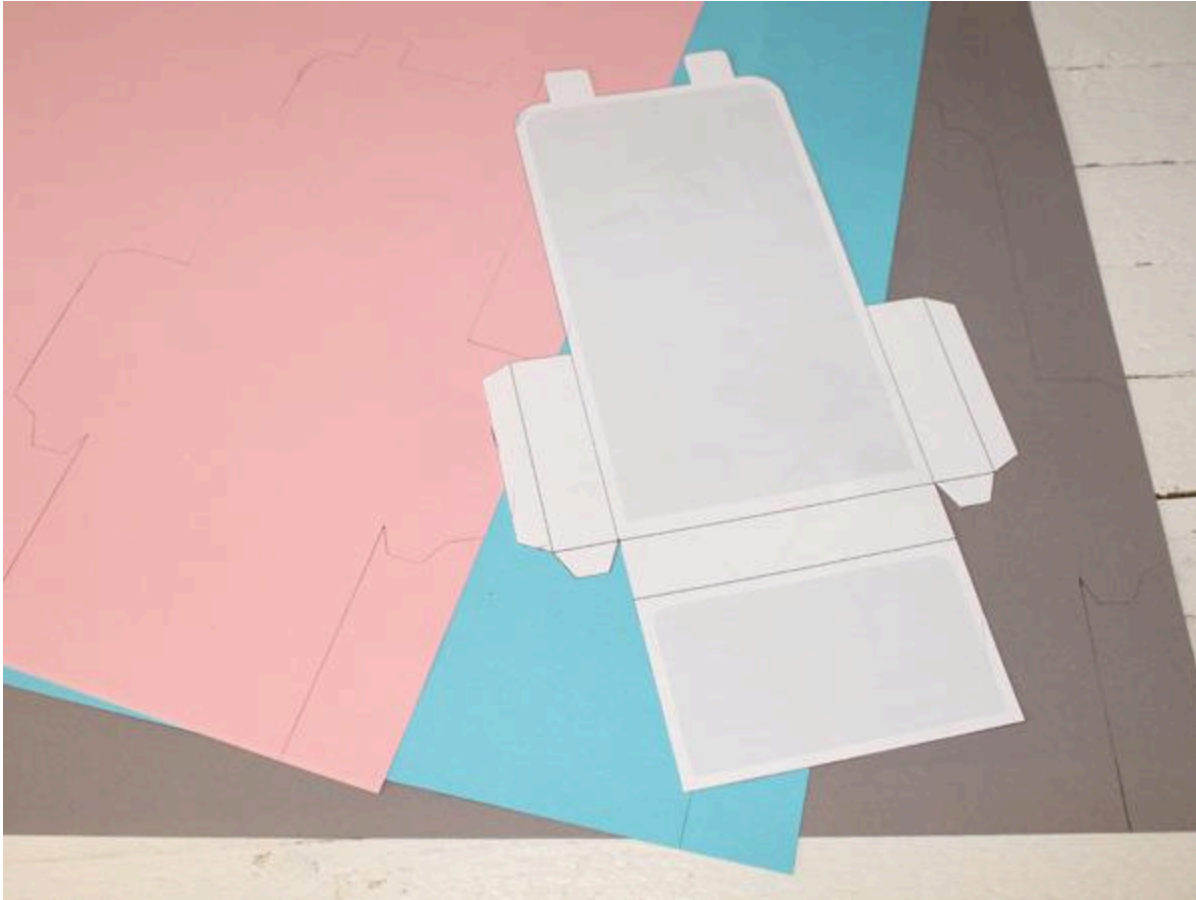


Step-by-step instructions for creative school enrolment invitation

# cards

## 1. Transfer and cut out the templates

First, download the template and cut it out. then transfer the outer contours to the Paper, which will form the basis for the respective satchel.



Once you have drawn enough satchels, cut out the gray areas of the template, transfer them to the motif cardboard and cut out the panels as well.



Then stick the panels onto the Paper . Make sure that the spacing on the sides is approximately the same. Double-sided adhesive tape works best. If you use handicraft glue , you should put something on top to weigh it down so that the Paper does not curl during the drying process.

## **2. Glue the satchel together**

Fold the edges of the Paper according to the template. The sides (without gluing) and the bottom must all have the same width, in this case 2 cm.

Attach a strip of double-sided adhesive adhesive tape, to the stickers, remove the protective film and stick the backpack together in stages.

Hold the satchel in both hands and carefully shape the lid with your hands. Adjust the Paper depending on how high or low the satchel closes. Fold the invitation so that it fits into the satchel and close it with a strip of double-sided tape adhesive tape.

### **3. Attach the individual parts**

Cut two strips approx. 1.5 cm wide and 8 cm long and one strip 1 cm wide and 10 cm long from the base paper. Glue the narrow strip to the top of the satchel with a little handicraft glue at both ends. As long as the glue has not yet set, you can align the handle.

Use the wide strips for the back straps, bend the ends a little at a time and glue them to the back of from the satchel. Once the strips are secure, you can carefully pull or press them into shape.

In addition, glue two wooden buttons in matching colors to the front as a fastener.

The satchels are now finished in their basic shape. But you can now decorate them as you wish further , e.g. with sprinkles, tags or name tags.

Have fun making your own and starting school! Discover all the materials you need in our online store now and start your DIY-Project!

## Must Have

[Motif block "GEOMETRY"](#)

● **7,69 €** (1 m2 = 4,71 €)

[Item details](#)

Quantity:

Add to  
cart 



## New instructions

Straight to your inbox every week

register now >

Article information:

<b>Article number</b>	<b>Article name</b>	<b>Qty</b>
71744102	Motif block "GEOMETRY"	1
706667-26	Coloured paperPink	1
706667-30	Coloured paperLight blue	1
706667-84	Coloured paperGrey	1
391665	VBS Wooden buttons "Colours & Sizes Mix"	1
697026	VBS Wooden numbers "Colourful", 250 pcs.	1
111065	VBS Handicraft glue85 g	1
21904	VBS Scissors "Soft-Grip", set of 2	1
644303-03	VBS Double page Adhesive tape3 mm	1