

Self-modeled aroma diffuser pendant

Instructions No. 3017

Difficulty: Beginner 🍃🍃🍃🍃

Working time: 1 hour

Carry your favorite fragrance with you at all times with this **self-sculpted and designed aroma jewelry** for essential oils & perfumes. This is the latest way to enjoy your favorite scented oils.

The **pendants** are made of soft clay and offer the opportunity to design them entirely according to your own ideas: A beautiful aroma jewelry, the latest trend in aromatherapy. The self-made pendants can be sprinkled with **essential oil** and therefore smell magical.



It's so easy to design your aroma diffuser jewelry:

Knead the **modelling clay** well and press it into the **casting mold**. Leave them to rest for about 4 hours and then carefully remove them from the mold. Smooth the surface with a little water so that you no longer have any visible cracks in the pendants. Use the sponge (included in the modeling tool set) to smooth the edges evenly. Now you

can carve in the symbols of your choice. If you do not succeed in engraving them as desired straight away, you can remove the engravings with the sponge and start again. Then leave the pendants to dry for approx. 24 hours.

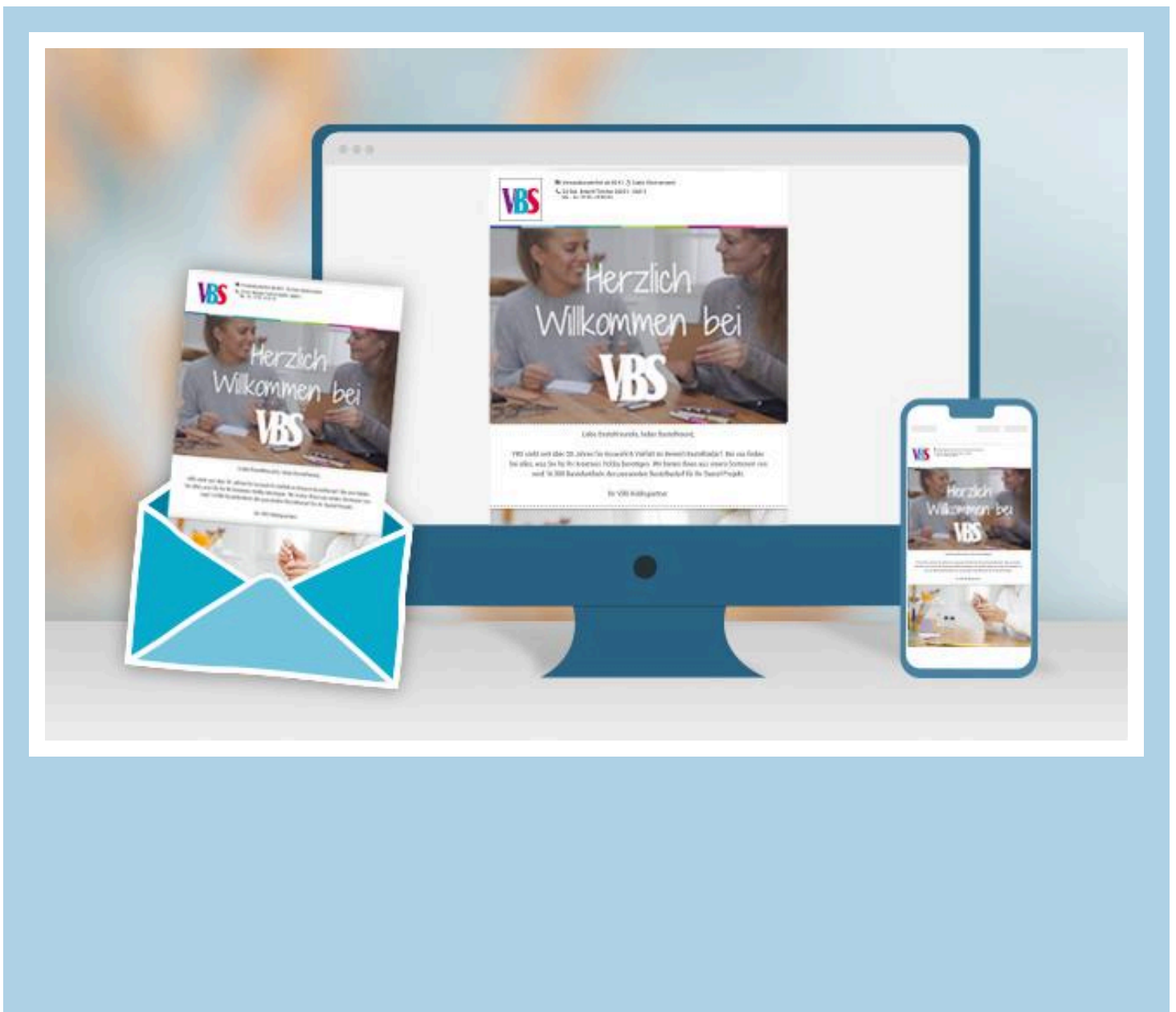
Coat the pendants with **clay sealant** after Time to dry: . This will seal the surfaces of your pendants.

Then pull the **cotton cord** through the modeled piece. Now you can decorate your piece of jewelry with another metal pendant. Then pull the ends of the cotton cord through a **wooden bead** and knot the ends.

Finally, apply a drop of the **oil** of your choice to the pendant.

Info: You can also carve symbols into the Time to dry: after the Time to dry: before sealing the piece of jewelry with clay sealant . However, these cannot be removed again if you do not succeed immediately.

You can find great fragrances and fragrance blends in our store at craft techniques - natural cosmetics - fragrances and additives.



New instructions

Straight to your inbox every week

register now >

Article information:

| Article number | Article name | Qty |
|----------------|---|-----|
| 511384-01 | Soft clay, 1.5 kgNature | 1 |
| 511384-02 | Soft clay, 1.5 kgTerracotta | 1 |
| 571135 | Clay sealant | 1 |
| 18215 | Essential oil, naturalRose | 1 |
| 18220 | Perfume oilVanilla | 1 |
| 14732 | Modelling and pottery set | 1 |
| 14380 | Silicone casting mould "Decoration pendant" | 1 |
| 579889 | VBS Wooden beads with natural grain, 100 g | 1 |
| 23280 | VBS Connectors mix "Good Life" | 1 |
| 650687-10 | Cotton cordNature | 1 |